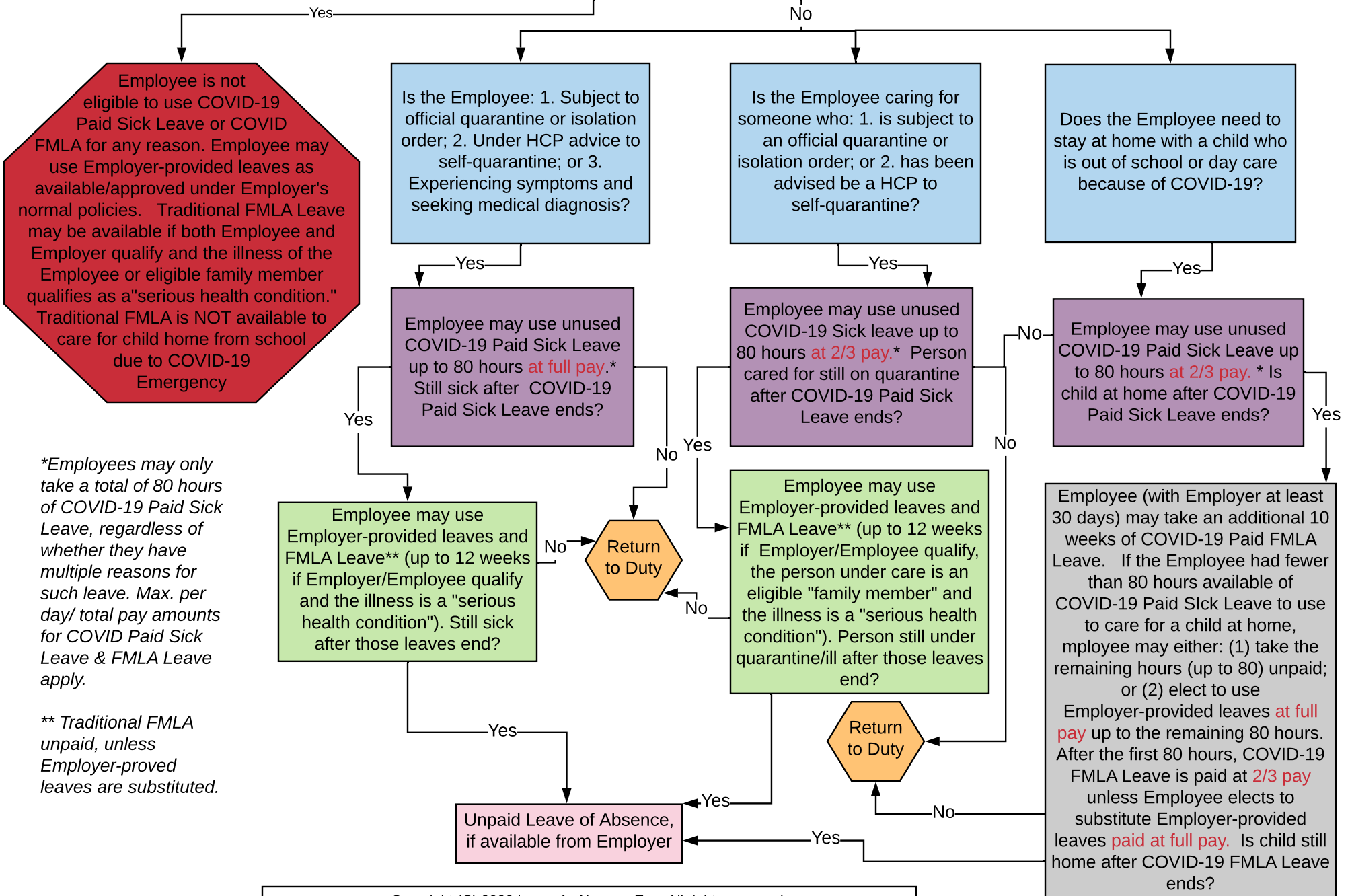


Is the Employee an Emergency Responder or a Health Care Provider (as defined by DOL) **AND** exempted by official action of Employer?



**Employees may only take a total of 80 hours of COVID-19 Paid Sick Leave, regardless of whether they have multiple reasons for such leave. Max. per day/ total pay amounts for COVID Paid Sick Leave & FMLA Leave apply.*

*** Traditional FMLA unpaid, unless Employer-proved leaves are substituted.*